

Printview: 2-conductor female connector; for insertion into carrier terminal blocks or male connectors; codable; can be commoned with adjacent jumpers and staggered jumpers; 4-pole - Item No.: 769-124

**2-conductor female connector; for insertion into carrier terminal blocks or male connectors; codable; can be commoned with adjacent jumpers and staggered jumpers; 4-pole**

Item No.: 769-124



2-conductor female connector; for insertion into carrier terminal blocks or male connectors; codable; can be commoned with adjacent jumpers and staggered jumpers; 4-pole

## Marking

RoHS ✓  
Compliant

## Business data

Supplier	WAGO
Item no.	769-124
GTIN / EAN	4044918473958
Content	1
Order amount	25
Customer item number	

## Notes

According to EN 61984, connectors without current interrupting capacity shall not be mated and unmated when live or under load.

## Technical data

### Miscellaneous

No. of Poles	4
Total number of connection points	8
Total number of potentials	4
Color	gray
Pollution degree (1)	3
Rated voltage EN (1) [V]	500 [V]
Rated surge voltage (1) [kV]	6 [kV]

Printview: 2-conductor female connector; for insertion into carrier terminal blocks or male connectors; codable; can be commoned with adjacent jumpers and staggered jumpers; 4-pole - Item No.: 769-124

Technical data	
Nominal current [A]	32 [A]
Connection technology (1)	CAGE CLAMP®
Nominal cross section 1	4 mm <sup>2</sup>
Solid sizes 1	0.08 ... 4 mm <sup>2</sup> / 28 ... 12 AWG
Fine-stranded wires 1	0.08 ... 4 mm <sup>2</sup> / 28 ... 12 AWG
Strip length 1	8 ... 9 mm / 0.31 ... 0.35 in
Type of wiring	Front-entry wiring
Marking level	Side marking
Insulating material	PA 6.6 V0
Fire load [MJ]	0.337 [MJ]
Weight [g]	20.717 [g]
Width	20 mm / 0.787 in
Height	45.2 mm / 1.78 in
Length	35.9 mm / 1.413 in
Module width [mm]	5 [mm]
Module width [inch] [inch]	0.197 [inch]

Approbation					
Item No.	Registration	Registration no.	Voltage [V]	Current [A]	Cross section [mm <sup>2</sup> , AWG]
769-124	ABS	05-HG476175/3-PDA	500	32	4
769-124	CCA	NTR NL-7162	500	28	0.08-4.00
769-124	CSA	154112-1101144	300	20	28-12
769-124	KEMA	2077750.01	500	32	4
769-124	UL	E45171	600	20	16-12"
769-124	UL	E45172	300	20	28-12

### Accessories

Printview: 2-conductor female connector; for insertion into carrier terminal blocks or male connectors; codable; can be commoned with adjacent jumpers and staggered jumpers; 4-pole - Item No.: 769-124

## Accessories

### Insulation stop

Item no.	Description	Pack. unit (Sub Pack)
769-470	Insulation stop; 0.08 ... 0.2 mm <sup>2</sup> "s" (0.14 mm <sup>2</sup> "f-st"); 5 pieces/strip	25
769-471	Insulation stop; 0.25 ... 0.5 mm <sup>2</sup> ; 5 pieces/strip	25
769-472	Insulation stop; 0.75 ... 1 mm <sup>2</sup> ; 5 pieces/strip	25

### Jumper

Item no.	Description	Pack. unit (Sub Pack)
280-402	Adjacent jumper; insulated; IN = IN terminal block	25
284-414	Step-down jumper; insulated; from 10/6 mm <sup>2</sup> to 4/2.5/1.5 mm <sup>2</sup> ; Nominal current 15 A	25
780-452	Staggered jumper; insulated; from 1 to 2; Spacing: 5 mm; suitable for 2-conductor female plugs	25
780-453	Staggered jumper; insulated; from 1 to 3; Spacing: 5 mm; suitable for 2-conductor female plugs	25
780-454	Staggered jumper; insulated; from 1 to 4; Spacing: 5 mm; suitable for 2-conductor female plugs	25
780-455	Staggered jumper; insulated; from 1 to 5; Spacing: 5 mm; suitable for 2-conductor female plugs	25
780-456	Staggered jumper; insulated; from 1 to 6; Spacing: 5 mm; suitable for 2-conductor female plugs	25
780-457	Staggered jumper; insulated; from 1 to 7; Spacing: 5 mm; suitable for 2-conductor female plugs	25
780-458	Staggered jumper; insulated; from 1 to 8; Spacing: 5 mm; suitable for 2-conductor female plugs	25

### Coding

Item no.	Description	Pack. unit (Sub Pack)
769-435	Coding pin; for coding of female plugs; for carrier terminal blocks / male connectors	25

### Strain relief

Item no.	Description	Pack. unit (Sub Pack)
769-412	Strain relief plate; 4- to 5-pole; snap-on type for female plugs; snap-on type for male connectors with CAGE CLAMP® connection	25

Printview: 2-conductor female connector; for insertion into carrier terminal blocks or male connectors; codable; can be commoned with adjacent jumpers and staggered jumpers; 4-pole - Item No.: 769-124

## Accessories

### Marking accessories

Item no.	Description	Pack. unit (Sub Pack)
248-501	Miniature WSB quick marking system; plain; Marker width 5 mm; 10 strips with 10 markers per card	5
2009-145	Mini-WSB Inline; plain; 1,700 Mini-WSB markers (5 mm) on roll; stretchable 5 - 5.2 mm	1
248-501/000-002	Miniature WSB quick marking system; plain; Marker width 5 mm; 10 strips with 10 markers per card	5
248-501/000-005	Miniature WSB quick marking system; plain; Marker width 5 mm; 10 strips with 10 markers per card	5
248-501/000-006	Miniature WSB quick marking system; plain; Marker width 5 mm; 10 strips with 10 markers per card	5
248-501/000-007	Miniature WSB quick marking system; plain; Marker width 5 mm; 10 strips with 10 markers per card	5
248-501/000-012	Miniature WSB quick marking system; plain; Marker width 5 mm; 10 strips with 10 markers per card	5
248-501/000-017	Miniature WSB quick marking system; plain; Marker width 5 mm; 10 strips with 10 markers per card	5
248-501/000-023	Miniature WSB quick marking system; plain; Marker width 5 mm; 10 strips with 10 markers per card	5
248-501/000-024	Miniature WSB quick marking system; plain; Marker width 5 mm; 10 strips with 10 markers per card	5

### Protective warning marker

Item no.	Description	Pack. unit (Sub Pack)
280-415	Protective warning marker; with high-voltage symbol, black; for 5 terminal blocks	25

### Locking levers

Item no.	Description	Pack. unit (Sub Pack)
769-430	Locking lever; can be snapped on female plugs; 2 poles and more	25
769-431	Locking lever; can be snapped on female plugs; 2 poles and more	25

Printview: 2-conductor female connector; for insertion into carrier terminal blocks or male connectors; codable; can be commoned with adjacent jumpers and staggered jumpers; 4-pole - Item No.: 769-124

---

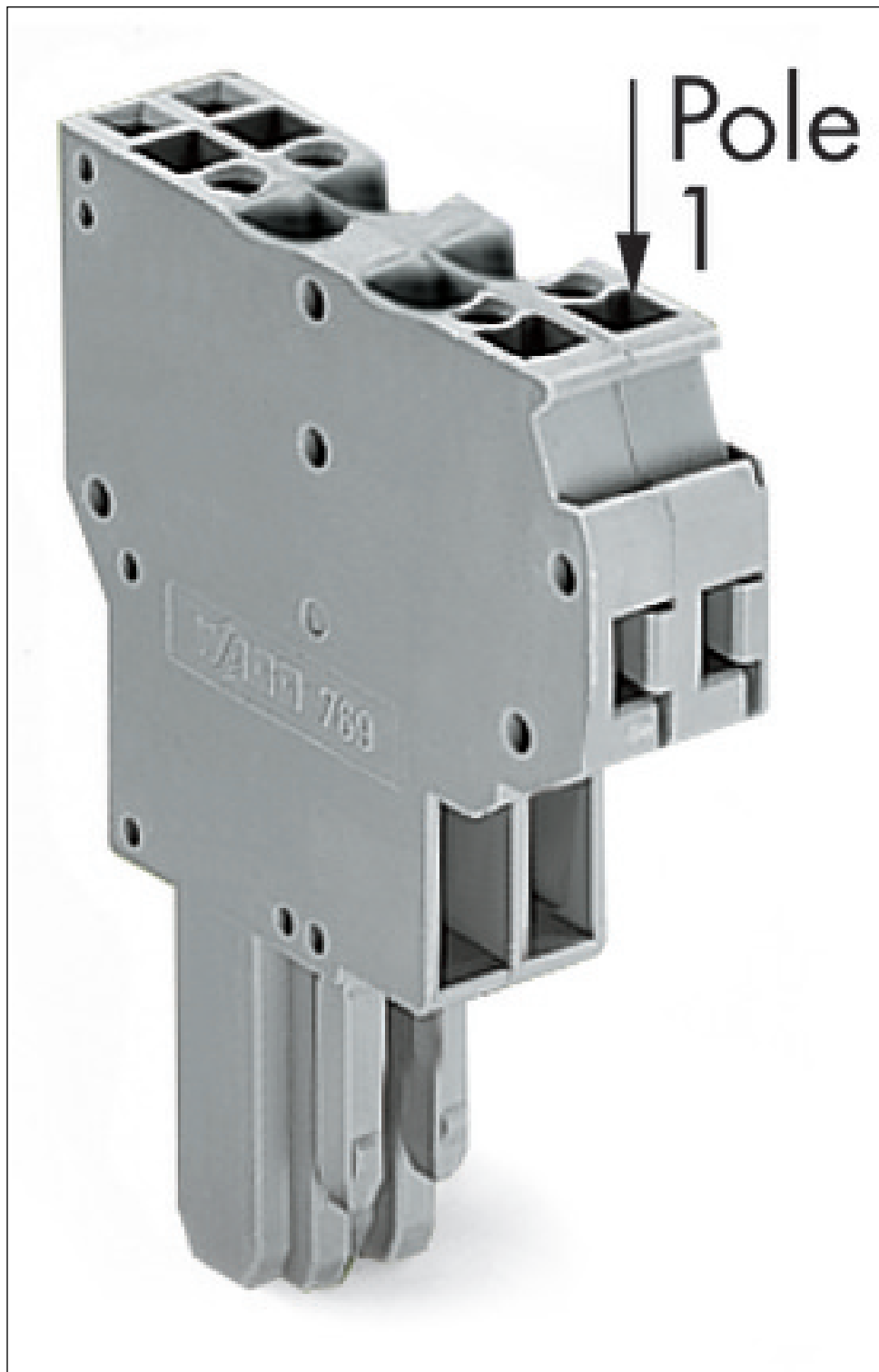
## Accessories

### General accessory

Item no.	Description	Pack. unit (Sub Pack)
210-136	Test plug; 2 mm Ø; with 500 mm cable	1
210-137	Test plug; 2.3 mm Ø; with 500 mm cable	1
210-720	Operating tool with partially insulated shaft; Type 2, blade (3.5 x 0.5) mm; suitable for 260, 261, 262, 264, 270, 280, 281, 290, 775, 776, 777, 769, 780, 781, 869, 870, 880, 2002, 2003, 2004, 2005 and 2022 Series	1
769-434	Push-button; loose; for female and male connectors with CAGE CLAMP® connection	100

Printview: 2-conductor female connector; for insertion into carrier terminal blocks or male connectors; codable; can be commoned with adjacent jumpers and staggered jumpers; 4-pole - Item No.: 769-124

Images & drawings



Printview: 2-conductor female connector; for insertion into carrier terminal blocks or male connectors;  
codable; can be commoned with adjacent jumpers and staggered jumpers; 4-pole - Item No.: 769-124

---

## Address

WAGO Kontakttechnik GmbH & Co. KG

Hansastr. 27

32423 Minden

Telefon: 0571/887-0

Fax: 0571/887-169

<http://www.wago.com>

© WAGO Kontakttechnik GmbH & Co. KG

Technische Änderungen und Irrtümer vorbehalten.